

It's Not A Dump!!!

A Transfer Station in Action

A 4th Grade Language Arts Enrichment Publication
Salisbury Central School 2006-2007

It's Not A Dump!!!

A Transfer Station in Action

A 4th Grade Language Arts Enrichment Publication
Salisbury Central School 2006-2007

Come to the Salisbury/Sharon Transfer Station!

Located on Route 41,
just south of Route 112.

Meet Mr. Larry Beck,
Manager 2002-2007



Come to the Salisbury/Sharon Transfer Station!

Located on Route 41,
just south of Route 112.

Meet Mr. Larry Beck,
Manager 2002-2007





Remember Your 3 Rs



Reduce Cut down on the amount of 'stuff' that you buy in the first place. **Reduce** the amount of waste you make by not even having it to begin with!!! It cuts down on greenhouse gasses and global warming!

Reuse Before throwing something away, ask yourself, does it have any life left in it? Can I keep using it, or can I give it to someone that might be able to use it? Can this item be **reused** in any way? It cuts down on greenhouse gasses and global warming!

Recycle Instead of putting it into the garbage, **recycle** it! A lot of our waste can be remanufactured into something new and useful. It saves resources AND energy!!! It cuts down on greenhouse gasses and global warming!



Remember Your 3 Rs



Reduce Cut down on the amount of 'stuff' that you buy in the first place. **Reduce** the amount of waste you make by not even having it to begin with!!! It cuts down on greenhouse gasses and global warming!

Reuse Before throwing something away, ask yourself, does it have any life left in it? Can I keep using it, or can I give it to someone that might be able to use it? Can this item be **reused** in any way? It cuts down on greenhouse gasses and global warming!

Recycle Instead of putting it into the garbage, **recycle** it! A lot of our waste can be remanufactured into something new and useful. It saves resources AND energy!!! It cuts down on greenhouse gasses and global warming!

Reduce

It cuts down on greenhouse gasses and global warming!

Stop and Think! Can I use:

This

INSTEAD of

This?



Or ask the more important question: Do I really need it at all?

Reduce

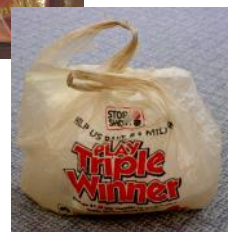
It cuts down on greenhouse gasses and global warming!

Stop and Think! Can I use:

This

INSTEAD of

This?



Or ask the more important question: Do I really need it at all?



Reuse At the Swap Shop



Before throwing something away, decide if it can be reused. If it is in good condition, try donating it to a person or group. If that is not possible, take it to the Swap Shop! It might be just what someone else has been looking for and that will keep it out of the garbage. You don't need to ask, and you don't need to pay! And, it cuts down on greenhouse gasses and global warming as well as on the garbage weight that we all need to pay for in 'tip' fees at the Connecticut Resource Recovery Authority (CRRRA).

When the Swap Shop is full and picked over, the Transfer Station workers sort out the things. They recycle what they can, and put the rest of it in the garbage hopper.



Reuse At the Swap Shop



Before throwing something away, decide if it can be reused. If it is in good condition, try donating it to a person or group. If that is not possible, take it to the Swap Shop! It might be just what someone else has been looking for and that will keep it out of the garbage. You don't need to ask, and you don't need to pay! And, it cuts down on greenhouse gasses and global warming as well as on the garbage weight that we all need to pay for in 'tip' fees at the Connecticut Resource Recovery Authority (CRRRA).

When the Swap Shop is full and picked over, the Transfer Station workers sort out the things. They recycle what they can, and put the rest of it in the garbage hopper.

Recycle

Recycling saves \$\$ money! We have to pay a lot of money to get rid of our waste. The most expensive fee for the Transfer Station is to pay to get rid of the garbage. Some of the recyclables cost less than the garbage to get rid of, and some of the recyclables we even GET paid for! People throw away all sorts of things—coat hangers, cardboard boxes, clothes, old radios, baskets... that could be recycled!

Recycling saves our environment! It uses fewer resources and takes less energy to turn an old item into something else (newspaper or plastic or glass or even electricity) than to produce it from scratch. And, it cuts down on greenhouse gasses and global warming!

Recycle

Recycling saves \$\$ money! We have to pay a lot of money to get rid of our waste. The most expensive fee for the Transfer Station is to pay to get rid of the garbage. Some of the recyclables cost less than the garbage to get rid of, and some of the recyclables we even GET paid for! People throw away all sorts of things—coat hangers, cardboard boxes, clothes, old radios, baskets... that could be recycled!

Recycling saves our environment! It uses fewer resources and takes less energy to turn an old item into something else (newspaper or plastic or glass or even electricity) than to produce it from scratch. And, it cuts down on greenhouse gasses and global warming!

Bulky Furniture and Pressure Treated Wood



All bulky furniture and pressure treated wood goes into this hopper. Pressure treated wood is wood that has been treated with chemicals to make it last longer. These chemicals are toxic and need to be handled carefully.

Bulky Furniture and Pressure Treated Wood



All bulky furniture and pressure treated wood goes into this hopper. Pressure treated wood is wood that has been treated with chemicals to make it last longer. These chemicals are toxic and need to be handled carefully.

Bulky furniture and pressure treated wood that is put into this hopper is delivered to ECO in Canaan, New York. At this time the material is ground up and put into a landfill, used as landfill cover.

It costs the Transfer Station \$125 per ton to get rid of furniture and pressure treated wood, so there is a fee for disposing of anything into this hopper. Anyone wanting to put things in here needs to check into the office first to pay the fee.

In 2005 the Transfer Station collected 1,127 tons of landfill waste.

Bulky furniture and pressure treated wood that is put into this hopper is delivered to ECO in Canaan, New York. At this time the material is ground up and put into a landfill, used as landfill cover.

It costs the Transfer Station \$125 per ton to get rid of furniture and pressure treated wood, so there is a fee for disposing of anything into this hopper. Anyone wanting to put things in here needs to check into the office first to pay the fee.

In 2005 the Transfer Station collected 1,127 tons of landfill waste.

Demolition



This is also sometimes called the wood box, but only for wood that has not been pressure treated. All sorts of things that might come from tearing apart a house can go in here.

Demolition



This is also sometimes called the wood box, but only for wood that has not been pressure treated. All sorts of things that might come from tearing apart a house can go in here.

Demolition materials that are put into this hopper are delivered to ECO in Canaan, New York. At this time the material is ground up and put into a landfill, used as landfill cover.

It costs the Transfer Station \$125 per ton to get rid of demolition waste, so there is a fee for disposing of anything into this hopper. Anyone wanting to put things in here needs to check into the office first to pay the fee.

In 2005 the Transfer Station collected 1,127 tons of demolition and landfill waste.

Demolition materials that are put into this hopper are delivered to ECO in Canaan, New York. At this time the material is ground up and put into a landfill, used as landfill cover.

It costs the Transfer Station \$125 per ton to get rid of demolition waste, so there is a fee for disposing of anything into this hopper. Anyone wanting to put things in here needs to check into the office first to pay the fee.

In 2005 the Transfer Station collected 1,127 tons of demolition and landfill waste.

Batteries



You must recycle lead and acid batteries, such as the batteries from cars, trucks, lawnmowers, and many other gasoline powered engines. It's the law! The only batteries that can be thrown away are household batteries like the kind that might be in a flashlight.

Batteries



You must recycle lead and acid batteries, such as the batteries from cars, trucks, lawnmowers, and many other gasoline powered engines. It's the law! The only batteries that can be thrown away are household batteries like the kind that might be in a flashlight.

The batteries are sent to a company called East Penn Co. in Pennsylvania.

East Penn Co. remanufactures the batteries using the lead and acid, and makes new batteries.

The Transfer Station gets paid \$1.50 for each battery that is taken by East Penn Co.

The Transfer Station collects an average of 6.9 tons of batteries per year.

The batteries are sent to a company called East Penn Co. in Pennsylvania.

East Penn Co. remanufactures the batteries using the lead and acid, and makes new batteries.

The Transfer Station gets paid \$1.50 for each battery that is taken by East Penn Co.

The Transfer Station collects an average of 6.9 tons of batteries per year.

Electronics



Electronics are things like computers, televisions, radios, telephones, and clocks—really anything that you might find in an office or use for work or entertainment.

Electronics



Electronics are things like computers, televisions, radios, telephones, and clocks—really anything that you might find in an office or use for work or entertainment.

CRT Recycling from New Bedford, Massachusetts takes our electronics. They sell the parts so they can remanufacture them into other electronics.

CRT Recycling picks up our electronics. The televisions need special handling. There are tubes inside a television that have to be carefully removed so they don't explode.

We are charged 11.5 cents a pound for TV's.

The Transfer Station collects about 29 tons of electronics per year.

CRT Recycling from New Bedford, Massachusetts takes our electronics. They sell the parts so they can remanufacture them into other electronics.

CRT Recycling picks up our electronics. The televisions need special handling. There are tubes inside a television that have to be carefully removed so they don't explode.

We are charged 11.5 cents a pound for TV's.

The Transfer Station collects about 29 tons of electronics per year.

Metal



Anything made out of metal can go into the metal dumpster, from rusty paperclips to old car parts. Appliances can go in there also as long as they have had the Freon removed first. See the pages on appliances for more information.

Metal



Anything made out of metal can go into the metal dumpster, from rusty paperclips to old car parts. Appliances can go in there also as long as they have had the Freon removed first. See the pages on appliances for more information.

The metal that the Transfer Station collects goes to a company called Metal Management in North Haven, Connecticut.

The metal is separated into ferrous and nonferrous metals. Ferrous metal is metal that has iron in it and makes it magnetic. The metal is either recycled in this country or shipped over seas.

All the metal that the Transfer Station collects is worth between \$85 and \$115 per ton depending on the market value the day that the metal is sold, so it is very important for us to recycle metal.

The Transfer Station collects about 285.83 tons of metal per year. At \$100/ton, that would be \$28,583.00 that the Transfer Station makes on recycled metal!

The metal that the Transfer Station collects goes to a company called Metal Management in North Haven, Connecticut.

The metal is separated into ferrous and nonferrous metals. Ferrous metal is metal that has iron in it and makes it magnetic. The metal is either recycled in this country or shipped over seas.

All the metal that the Transfer Station collects is worth between \$85 and \$115 per ton depending on the market value the day that the metal is sold, so it is very important for us to recycle metal.

The Transfer Station collects about 285.83 tons of metal per year. At \$100/ton, that would be \$28,583.00 that the Transfer Station makes on recycled metal!

Tires



The types of tires you can bring to the Transfer Station are car tires and all types of truck tires such as HUGE tractor tires and small pickup truck tires.

Tires



The types of tires you can bring to the Transfer Station are car tires and all types of truck tires such as HUGE tractor tires and small pickup truck tires.

The tires that are collected at the Transfer Station go to Casings, in New York. Some of them are ground up and turned into pavement for roads in southern states, and others are burned to generate electricity!

It costs \$5.00 to drop off car tires at the Transfer Station because the station has to pay to have them hauled away.

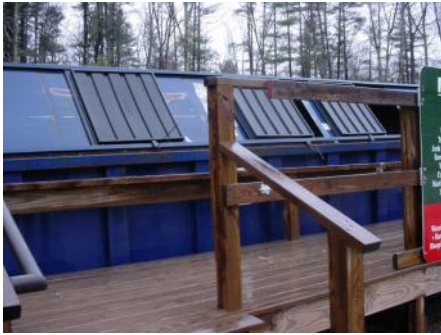
The Transfer Station collected 14.43 tons of tires in 2005!

The tires that are collected at the Transfer Station go to Casings, in New York. Some of them are ground up and turned into pavement for roads in southern states, and others are burned to generate electricity!

It costs \$5.00 to drop off car tires at the Transfer Station because the station has to pay to have them hauled away.

The Transfer Station collected 14.43 tons of tires in 2005!

Paper



In the paper bin you can put: Paper, junk mail, magazines, newspapers, boxboard, paperback books, and phonebooks. NO carbon paper, metal backed paper, or wax paper should go in the paper bin!

Paper



In the paper bin you can put: Paper, junk mail, magazines, newspapers, boxboard, paperback books, and phonebooks. NO carbon paper, metal backed paper, or wax paper should go in the paper bin!

CRRA (Connecticut Resource Recovery Authority) collects our paper and the Transfer Station hauls it to Torrington, CT where it is then hauled to Hartford, CT. After that it is either manufactured into new paper products or sold to China.

We don't get paid anything for this paper, but we also don't get charged a tip fee to drop it off.

In 2005 the Transfer Station collected 327.11 tons of paper! **815 tons of paper and cardboard combined were collected at, and recycled from, our Transfer Station. This equals 13,860 trees saved!**

CRRA (Connecticut Resource Recovery Authority) collects our paper and the Transfer Station hauls it to Torrington, CT where it is then hauled to Hartford, CT. After that it is either manufactured into new paper products or sold to China.

We don't get paid anything for this paper, but we also don't get charged a tip fee to drop it off.

In 2005 the Transfer Station collected 327.11 tons of paper! **815 tons of paper and cardboard combined were collected at, and recycled from, our Transfer Station. This equals 13,860 trees saved!**

Cardboard



You can put corrugated cardboard, brown paper bags, newspapers, boxboard, and paper feed bags in the cardboard hopper. Eventually the cardboard and paper hoppers get mixed together so if some things get crossed between them it's okay.

Cardboard



You can put corrugated cardboard, brown paper bags, newspapers, boxboard, and paper feed bags in the cardboard hopper. Eventually the cardboard and paper hoppers get mixed together so if some things get crossed between them it's okay.

The cardboard that is put in the cardboard bin is hauled by our Transfer Station to CRRA (Connecticut Resources Recovery Authority) in Torrington, CT and then goes on to Hartford.

The cardboard is **recycled** into new cardboard and then is either sold in this country or shipped over seas, mostly to China.

We don't get paid anything for this paper, but we also don't get charged a tip fee to drop it off.

The Transfer Station hauled 488.27 tons of cardboard away to the CRRA in 2005! **815 tons of paper and cardboard combined were collected at, and recycled from, our Transfer Station. This equals 13,860 trees saved!**

The cardboard that is put in the cardboard bin is hauled by our Transfer Station to CRRA (Connecticut Resources Recovery Authority) in Torrington, CT and then goes on to Hartford.

The cardboard is **recycled** into new cardboard and then is either sold in this country or shipped over seas, mostly to China.

We don't get paid anything for this paper, but we also don't get charged a tip fee to drop it off.

The Transfer Station hauled 488.27 tons of cardboard away to the CRRA in 2005! **815 tons of paper and cardboard combined were collected at, and recycled from, our Transfer Station. This equals 13,860 trees saved!**

Clothing



What can be put in the clothing bin?

Anything made out of cloth or leather.

Leather belts, clothing in any condition, shoes, sheets, blankets,
and all things made of fabric.

Clothing



What can be put in the clothing bin?

Anything made out of cloth or leather.

Leather belts, clothing in any condition, shoes, sheets, blankets,
and all things made of fabric.

Clothing that is put in the clothing bin at the Transfer Station is shipped to AFAB in Waterbury.

At AFAB they either reuse the clothes if they are in reasonable condition, turn it into rags or, if it's the right kind of fabric, they make it into some kinds of paper.

All the clothing that gets picked up by AFAB is weighed and we are paid \$20.00 for every ton.

The Transfer Station collects around 41.58 tons of clothing per year.

Clothing that is put in the clothing bin at the Transfer Station is shipped to AFAB in Waterbury.

At AFAB they either reuse the clothes if they are in reasonable condition, turn it into rags or, if it's the right kind of fabric, they make it into some kinds of paper.

All the clothing that gets picked up by AFAB is weighed and we are paid \$20.00 for every ton.

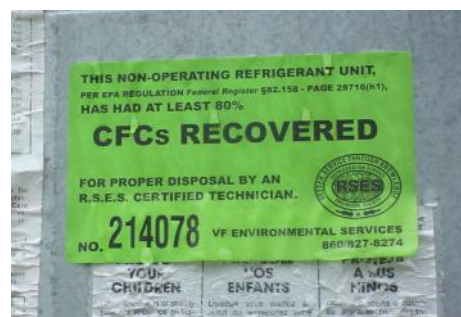
The Transfer Station collects around 41.58 tons of clothing per year.

Appliances



Do you have an old refrigerator and don't know what to do with it? Any metal appliance with Freon, a poisonous chemical that contains CFCs (**Chlorofluorocarbons**), which can pollute the air, has to be treated very carefully. The Transfer Station calls in a special Hazardous Material (HazMat) team to take out the Freon. It is then given a special green label telling the Transfer Station that this job has been completed. Then the old appliance can go into the metal dumpster, along with stoves and other useless junk metal.

Appliances



Do you have an old refrigerator and don't know what to do with it? Any metal appliance with Freon, a poisonous chemical that contains CFCs (**Chlorofluorocarbons**), which can pollute the air, has to be treated very carefully. The Transfer Station calls in a special Hazardous Material (HazMat) team to take out the Freon. It is then given a special green label telling the Transfer Station that this job has been completed. Then the old appliance can go into the metal dumpster, along with stoves and other useless junk metal.

Appliances like stoves and washing machines can go straight into the metal dumpster. Refrigerators, air conditioners and dehumidifiers have to first be treated to get rid of the Freon.

After the Freon is retrieved from the appliances it is taken by VF Environmental, where they recycle it.

In 2005 the Transfer Station collected 285.83 tons of metal appliances.

It costs \$25.00 to drop off appliances with Freon at the Transfer Station. The Transfer Station has to pay to have the Freon removed and then they have to move it up to the metal dumpster. Handling appliances safely is a lot of work!

Appliances like stoves and washing machines can go straight into the metal dumpster. Refrigerators, air conditioners and dehumidifiers have to first be treated to get rid of the Freon.

After the Freon is retrieved from the appliances it is taken by VF Environmental, where they recycle it.

In 2005 the Transfer Station collected 285.83 tons of metal appliances.

It costs \$25.00 to drop off appliances with Freon at the Transfer Station. The Transfer Station has to pay to have the Freon removed and then they have to move it up to the metal dumpster. Handling appliances safely is a lot of work!

Paint

All kinds of paint, whether it is latex paint or oil-based paint, can be dropped off at the Transfer Station. It should be taken to the Swap Shop and placed onto the floor next to the oil bin.



Paint

All kinds of paint, whether it is latex paint or oil-based paint, can be dropped off at the Transfer Station. It should be taken to the Swap Shop and placed onto the floor next to the oil bin.



The paint that is dropped off at the Transfer Station is mixed in with all the other paint using a special machine that opens the can, drains the paint into a big barrel, and then crushes the metal.

The crushed metal can then goes into the metal dumpster. United Industrial takes the paint away where it is burned to generate electricity for Connecticut residents.

It costs \$2.00 to drop off a can of paint at the Transfer Station, and the Station pays \$3.50 per gallon to have it taken away.

In 2005 the Transfer Station collected 1320 gallons of paint.

The paint that is dropped off at the Transfer Station is mixed in with all the other paint using a special machine that opens the can, drains the paint into a big barrel, and then crushes the metal.

The crushed metal can then goes into the metal dumpster. United Industrial takes the paint away where it is burned to generate electricity for Connecticut residents.

It costs \$2.00 to drop off a can of paint at the Transfer Station, and the Station pays \$3.50 per gallon to have it taken away.

In 2005 the Transfer Station collected 1320 gallons of paint.

Oil



The oil collection tank is inside the Swap Shop. You can put transmission fluid, hydraulic fluid, and motor oil in this tank. You **CANNOT** put paint or antifreeze in the oil tank!

Oil



The oil collection tank is inside the Swap Shop. You can put transmission fluid, hydraulic fluid, and motor oil in this tank. You **CANNOT** put paint or antifreeze in the oil tank!

The oil you bring to the transfer station goes in the furnace to provide heat for the transfer station building. The oil you bring is recycled right where it is dropped off!

The transfer station collected 1,800 gallons of used oil in 2005. They used 1,600 gallons of oil to heat their building and had 600 gallons of oil left over! Think of the money and the fuel oil that was saved!

The waste oil furnace has been in use for 5 years.

The oil you bring to the transfer station goes in the furnace to provide heat for the transfer station building. The oil you bring is recycled right where it is dropped off!

The transfer station collected 1,800 gallons of used oil in 2005. They used 1,600 gallons of oil to heat their building and had 600 gallons of oil left over! Think of the money and the fuel oil that was saved!

The waste oil furnace has been in use for 5 years.

Small Batteries, Cartridges and Eyeglasses



The only small batteries that should be thrown away are small household batteries that might go in a flashlight. All other batteries, like batteries that go in cameras, cell phones or laptop computers must be recycled. You should also recycle cartridges from computer printers.

Small Batteries, Cartridges and Eyeglasses



The only small batteries that should be thrown away are small household batteries that might go in a flashlight. All other batteries, like batteries that go in cameras, cell phones or laptop computers must be recycled. You should also recycle cartridges from computer printers.

There are a lot of things that we have that use small batteries and cartridges like cell phones, some cameras and computer printers. They may have hazardous materials in them. These need to be disposed of carefully and should not go into the garbage. At the Transfer Station you can drop these batteries and cartridges off in a container in the Swap Shop.

The **batteries and cartridges** will be packaged and sent to companies that remanufacture them into other new batteries and cartridges.

Eyeglasses can also be dropped off in the Swap Shop. They are given to the Lions Club. The Lions Club cleans and repairs them and donates them to people that need glasses but can't afford them.

There are a lot of things that we have that use small batteries and cartridges like cell phones, some cameras and computer printers. They may have hazardous materials in them. These need to be disposed of carefully and should not go into the garbage. At the Transfer Station you can drop these batteries and cartridges off in a container in the Swap Shop.

The **batteries and cartridges** will be packaged and sent to companies that remanufacture them into other new batteries and cartridges.

Eyeglasses can also be dropped off in the Swap Shop. They are given to the Lions Club. The Lions Club cleans and repairs them and donates them to people that need glasses but can't afford them.

Glass, Cans, Plastic and More!



Plastic # 1 and 2 can be put into the glass, cans, and plastics bin. You can also put **tin and aluminum cans** in this bin, and **glass bottles**. You can put **cardboard milk cartons**, all **aseptic food containers** and even **aerosol cans** in this bin! You **cannot** put hazardous waste containers in this bin, even if they are empty.

Returnable cans and bottles can also go in here, but there is a separate container for those if you can sort them out ahead of time. That way, individuals who want to, can make some money by getting the 5-cent deposits back.



Glass, Cans, Plastic and More!



Plastic # 1 and 2 can be put into the glass, cans, and plastics bin. You can also put **tin and aluminum cans** in this bin, and **glass bottles**. You can put **cardboard milk cartons**, all **aseptic food containers** and even **aerosol cans** in this bin! You **cannot** put hazardous waste containers in this bin, even if they are empty.

Returnable cans and bottles can also go in here, but there is a separate container for those if you can sort them out ahead of time. That way, individuals who want to, can make some money by getting the 5-cent deposits back.



The Transfer Station takes all of the glass bottles, cans and plastic to the Connecticut Resources Recovery Authority (CRRA) in Torrington, CT where it is sorted. To start with they can use a big blower to separate out the plastic.

These containers are sold and remanufactured into new products. The glass is crushed and used in roads, sidewalks and as landfill cover.

We do not have to pay to get rid of these containers, but we also do not get paid anything for it.

The Transfer station collects an average of 377.8 tons of bottles, cans and plastic per year!

The Transfer Station takes all of the glass bottles, cans and plastic to the Connecticut Resources Recovery Authority (CRRA) in Torrington, CT where it is sorted. To start with they can use a big blower to separate out the plastic.

These containers are sold and remanufactured into new products. The glass is crushed and used in roads, sidewalks and as landfill cover.

We do not have to pay to get rid of these containers, but we also do not get paid anything for it.

The Transfer station collects an average of 377.8 tons of bottles, cans and plastic per year!

Leaves and Trees



Yard leaves and Christmas trees can be taken to the Transfer Station to be recycled. The leaves need to be emptied out of bags. No bags are allowed.



Leaves and Trees



Yard leaves and Christmas trees can be taken to the Transfer Station to be recycled. The leaves need to be emptied out of bags. No bags are allowed.



The Transfer Station delivers the leaves to a place called Sheffield Foods in Massachusetts where they are composted, and the compost is sold.

Except for the cost of driving the truck, there is no cost involved.

The Transfer Station delivers the leaves to a place called Sheffield Foods in Massachusetts where they are composted, and the compost is sold.

Except for the cost of driving the truck, there is no cost involved.

Garbage



The only thing that is supposed to go into the garbage hopper is **garbage**! That's why it's the last stop at the Transfer Station. NO items that can be recycled should go into this hopper. It is up to all of us to generate as little garbage as possible, and recycle as much as we can, no matter how small.

Garbage



The only thing that is supposed to go into the garbage hopper is **garbage**! That's why it's the last stop at the Transfer Station. NO items that can be recycled should go into this hopper. It is up to all of us to generate as little garbage as possible, and recycle as much as we can, no matter how small.

CRRA (Connecticut Resources Recovery Authority) handles the MSW (municipal solid waste) for 70 towns in Connecticut. We take it to Hartford, Connecticut and the CRRA incinerator turns it into electricity.

In 2005 we collected 4,100 tons of garbage (MSW) and we had to pay **\$285,998.00** to dispose of it. The Transfer Station hauled it to the Hartford burn plant.

CRRA (Connecticut Resources Recovery Authority) handles the MSW (municipal solid waste) for 70 towns in Connecticut. We take it to Hartford, Connecticut and the CRRA incinerator turns it into electricity.

In 2005 we collected 4,100 tons of garbage (MSW) and we had to pay **\$285,998.00** to dispose of it. The Transfer Station hauled it to the Hartford burn plant.

Hazardous Waste



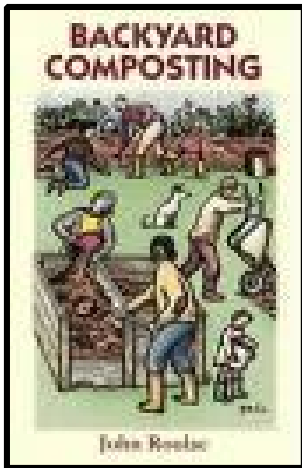
There are some hazardous waste products that cannot be dropped off at the Transfer Station. If you can't use them up, it is important to dispose of them properly. Each year, there is a hazardous waste collection day for area towns. It is free, although you must get a ticket to go. Look for notices about these days, and pick up a ticket in advance at the Town Hall.

Hazardous Waste



There are some hazardous waste products that cannot be dropped off at the Transfer Station. If you can't use them up, it is important to dispose of them properly. Each year, there is a hazardous waste collection day for area towns. It is free, although you must get a ticket to go. Look for notices about these days, and pick up a ticket in advance at the Town Hall.

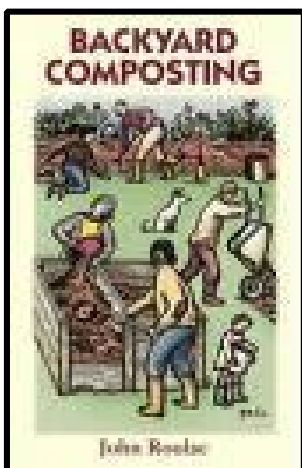
Composting!



A lot of our solid waste is from kitchen scraps, as well as leaves and yard scraps. Food waste is particularly heavy and can be composted. Composting is very easy to do! You can get a fancy compost bin, or use boards or wire to make an enclosure. Put in all your plant waste from your yard and kitchen and watch it turn in to nice rich soil. Then, put it on your garden or just dump it in on a field or in the woods. It's free, beneficial, and saves the town money!



Composting!



A lot of our solid waste is from kitchen scraps, as well as leaves and yard scraps. Food waste is particularly heavy and can be composted. Composting is very easy to do! You can get a fancy compost bin, or use boards or wire to make an enclosure. Put in all your plant waste from your yard and kitchen and watch it turn in to nice rich soil. Then, put it on your garden or just dump it in on a field or in the woods. It's free, beneficial, and saves the town money!



Transportation



Transportation



The Transfer Station owns its own trucks for hauling away garbage and recyclables. They use **biodiesel** fuel in their trucks.

Biodiesel fuel is fuel that is made from vegetable oil and waste grease. This fuel is made here in the United States and is a cleaner fuel than regular diesel, which is what most trucks, and some cars run on. The fuel that the Transfer Station uses is 20% corn oil and 80% diesel.

The Transfer Station owns its own trucks for hauling away garbage and recyclables. They use **biodiesel** fuel in their trucks.

Biodiesel fuel is fuel that is made from vegetable oil and waste grease. This fuel is made here in the United States and is a cleaner fuel than regular diesel, which is what most trucks, and some cars run on. The fuel that the Transfer Station uses is 20% corn oil and 80% diesel.

Important Departing Messages

"It is predicted that 35 years from now the Arctic icecap will be gone. If more towns had Transfer Stations as great as ours and everyone did their part to recycle, the icecap might last a little longer." **Samuel Bradway**

"When you throw a perfectly good basket into the garbage hopper you are hurting the environment. You could bring it to the swap shop. Remember, one person's junk is another person's treasure." **Carly Craig**

"If you ever have an item that can be recycled that you want to throw into the garbage, stop and think about how much difference it will make if you just recycle that item. Even if you think it won't do much of anything, it really can make a difference."
Taylor Dowd

"We should recycle because it helps the environment. For example, if we recycle paper we save more trees, which bring us oxygen and help to purify the air! It also helps the community if we recycle because it saves money." **Maggie Frankenbach**

Important Departing Messages

"It is predicted that 35 years from now the Arctic icecap will be gone. If more towns had Transfer Stations as great as ours and everyone did their part to recycle, the icecap might last a little longer." **Samuel Bradway**

"When you throw a perfectly good basket into the garbage hopper you are hurting the environment. You could bring it to the swap shop. Remember, one person's junk is another person's treasure." **Carly Craig**

"If you ever have an item that can be recycled that you want to throw into the garbage, stop and think about how much difference it will make if you just recycle that item. Even if you think it won't do much of anything, it really can make a difference."
Taylor Dowd

"We should recycle because it helps the environment. For example, if we recycle paper we save more trees, which bring us oxygen and help to purify the air! It also helps the community if we recycle because it saves money." **Maggie Frankenbach**

"Throwing away items that can be recycled is not a good thing to do. I hope this book has encouraged you to push yourself to recycle as much as you can because even you can make a difference." **Christopher Kirby**

"Turn off the lights when you leave a room. Leaving lights on wastes energy and increases global warming." **Ismael Lake-Ginouves**

"Change your incandescent light bulbs to florescent light bulbs. These will use less energy and will help cut down on greenhouse gasses which will help reduce global warming." **James J. McNulty**

"This book was published to help you know more about the Transfer Station, and to learn that it transfers your waste products to places where it can be made into other products. If you recycle you can feel good because you know you did something good for the earth." **Sarah Miller**

"Even if you do the smallest thing to help our earth you can still make a difference. Help our community by planting a tree." **Rebecca Rashkoff**

"Throwing away items that can be recycled is not a good thing to do. I hope this book has encouraged you to push yourself to recycle as much as you can because even you can make a difference." **Christopher Kirby**

"Turn off the lights when you leave a room. Leaving lights on wastes energy and increases global warming." **Ismael Lake-Ginouves**

"Change your incandescent light bulbs to florescent light bulbs. These will use less energy and will help cut down on greenhouse gasses which will help reduce global warming." **James J. McNulty**

"This book was published to help you know more about the Transfer Station, and to learn that it transfers your waste products to places where it can be made into other products. If you recycle you can feel good because you know you did something good for the earth." **Sarah Miller**

"Even if you do the smallest thing to help our earth you can still make a difference. Help our community by planting a tree." **Rebecca Rashkoff**

How did this book come to be?

In the fall, we (the 4th grade students in the Language Arts Enrichment class) were involved in a unit called "Earth Patrol". We were reading nonfiction books about some of the problems plaguing our earth, like acid rain, global warming, toxic waste, air, land and water pollution, and solid waste. This was very scary and depressing!

Then, we went on a field trip to the Transfer Station where Mr. Beck gave us a tour. We learned a lot, and it also made us feel that maybe things were not as bad as we thought they were. We realized that there are some important things happening right here in our town to help us with the problem of pollution and waste. We thought, "Wouldn't it be great if everyone in town could have a tour of the Transfer Station?" That is what gave us the idea for this book. We want as many people as possible to learn about what happens to their waste. This is important information! We presented our book to the Recycling Committee and now we are giving it to you. After reading this book, please do not throw it away! Pass it on to someone else. Thank you!

We would like to thank:

Mr. Beck from the Transfer Station for giving us such a fantastic tour, for helping us with this project, and for doing such a great job for our town and Earth;

Mrs. Meiers and Mrs. M. Murray at Salisbury Central for helping us with the printing;

The Salisbury Association Land Trust for paying for the cost of printing our book.

Thank you!

For more information, you may contact our teacher, **Jennifer Law**, at 435-9871 x131.

How did this book come to be?

In the fall, we (the 4th grade students in the Language Arts Enrichment class) were involved in a unit called "Earth Patrol". We were reading nonfiction books about some of the problems plaguing our earth, like acid rain, global warming, toxic waste, air, land and water pollution, and solid waste. This was very scary and depressing!

Then, we went on a field trip to the Transfer Station where Mr. Beck gave us a tour. We learned a lot, and it also made us feel that maybe things were not as bad as we thought they were. We realized that there are some important things happening right here in our town to help us with the problem of pollution and waste. We thought, "Wouldn't it be great if everyone in town could have a tour of the Transfer Station?" That is what gave us the idea for this book. We want as many people as possible to learn about what happens to their waste. This is important information! We presented our book to the Recycling Committee and now we are giving it to you. After reading this book, please do not throw it away! Pass it on to someone else. Thank you!

We would like to thank:

Mr. Beck from the Transfer Station for giving us such a fantastic tour, for helping us with this project, and for doing such a great job for our town and Earth;

Mrs. Meiers and Mrs. M. Murray at Salisbury Central for helping us with the printing;

The Salisbury Association Land Trust for paying for the cost of printing our book.

Thank you!

For more information, you may contact our teacher, **Jennifer Law**, at 435-9871 x131.